



Juvenile Justice

- General Arrests
- Drug and Alcohol Related Arrests
- Youth in Adult Correctional Facilities
- Juvenile Delinquency
 - Appearance Tickets
 - Race/Ethnicity Breakdown
 - Case Outcomes
 - Youth in Detention Centers

Juvenile Justice

Why is it important?

Young people who commit crimes represent one of the worst-case outcomes that may result from our failure to ensure that all youngsters are healthy, safe and prepared for life's challenges.

Juvenile delinquents are youngsters between the ages of 7 and 16 who are arrested for an offense that would be a crime if committed by an adult. Although they represent a small segment of Westchester's children, they demand our serious attention because of the personal and societal costs they represent. Acts of juvenile delinquency not only signify community disturbances, disruption in the lives of individual youngsters and their families, they also represent high per-person expenditure for the services of police, court personnel, corrections officers, mental health, substance abuse treatment, and other service providers. Ultimately, they may represent further costs to society in adult incarceration, unemployment and generational cycles of anti-social behavior.

In Westchester County, the Probation Department's Juvenile Delinquency Intake program screens cases either for referral to the Family court for prosecution or for adjustment out of the system. After the arrest of a child between the ages of 7 and 16, and the issuance of an Appearance Ticket by the arresting police jurisdiction, Juvenile Delinquency Intake provides the opportunity for the arrested child and parents to meet with a Probation Officer, in order to determine whether a matter may be diverted/adjusted or prosecuted in the Family Court. It also provides an opportunity for the victim to participate in the process. If the Department considers court intervention to be unnecessary, the juvenile may be referred for a wide variety of services.

If the case is referred for prosecution in Family Court, typical dispositions of such cases may include conditional discharge, probation, or placement in secure or non-secure detention or in a residential treatment facility.

The types of offenses with which a juvenile delinquent may be charged include Part I and Part II offense as defined by the Uniform Crime Report. There are eight Part I offenses, including three property crimes (burglary, larceny and motor vehicle theft) and five violent crimes (murder, non-negligent manslaughter, forcible rape, robbery, and aggravated assault). Part II Crimes include simple assault, curfew offenses and loitering, embezzlement, forgery and counterfeiting, disorderly conduct, driving under the influence, drug offenses, fraud, gambling, liquor offenses, offenses against the family, prostitution, public drunkenness, runaways, sex offenses, stolen property, vandalism, vagrancy, and weapons offenses.

Persons in Need of Supervision (PINS) cases, which are also handled through the Probation Department, are discussed in the section on Child Welfare.

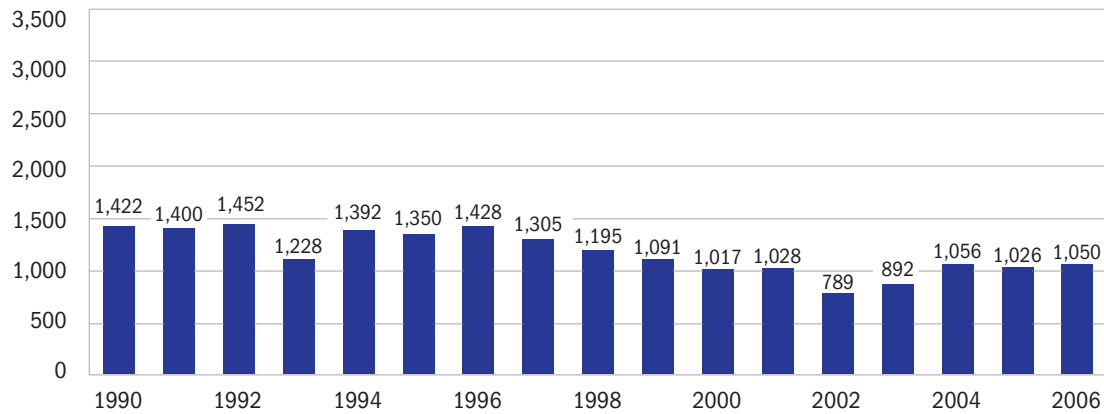
What stands out?

- For the ten year period from 1996 to 2006, arrests for Part I crimes peaked at 1,428 in the year 1996, and reached a low of 789 in the year 2002. However, since then, the number of Part I arrests has shown signs of increasing – as of the year 2006, the number of Part I arrests was 1,050.
- In the same ten year period, youth arrests for Part II crimes peaked in 1996 at 2,780, then declined to a low of 2,134 in 1999. Since then, youth Part II arrests have remained relatively steady. In 2006, the most common Part II charges, for youth under 18 years old, was simple assault, followed by marijuana use.

- For youth in the 13-15 years old age group, the number of Part I and II arrests has been declining.
- As of 2006, the last year of available data, the number of property related crimes by young people has decreased by 44% since 1990, while violent crimes have increased by 25% in the same time period.
- Drug related youth arrests have fluctuated since 1990, initially going down for several years, than quickly increasing in the late 90s, only to fall and rise again in the following five years. In 2005, drug related youth arrests reached its highest levels since 1990. Arrests fell in 2006, and remained at an average rate for the county. It is important to note that as a rate per youth, Westchester has one of the lowest drug-related youth arrests rates in the state.
- Over the past several years, young people arrested for Juvenile Delinquency are being diverted from prosecution in court at an increased rate. This represents a positive trend towards providing more treatment and supervision options instead of detention.
- There are vast disparities in the rate of juvenile delinquency appearance tickets issued between White, Black/African-American and Latino youth. White youth are issued appearance tickets at the rate of 20.7 arrests for every 10,000 of the youth population, while Latino youth issues appearance tickets at the rate of 47.3 and Black/African-American youth at the rate of 118.9.

Total Part I Arrests

Youth under 18 Years Old



In 2006, for youth under 18, Westchester had the 8th lowest arrest rate among New York's 57 counties, excluding NYC (17th lowest for Part I offenses and 5th lowest for Part II offenses).

There are eight Part I offenses, including three property crimes (burglary, larceny and motor vehicle theft) and five violent crimes (murder, non-negligent manslaughter, forcible rape, robbery, and aggravated assault).

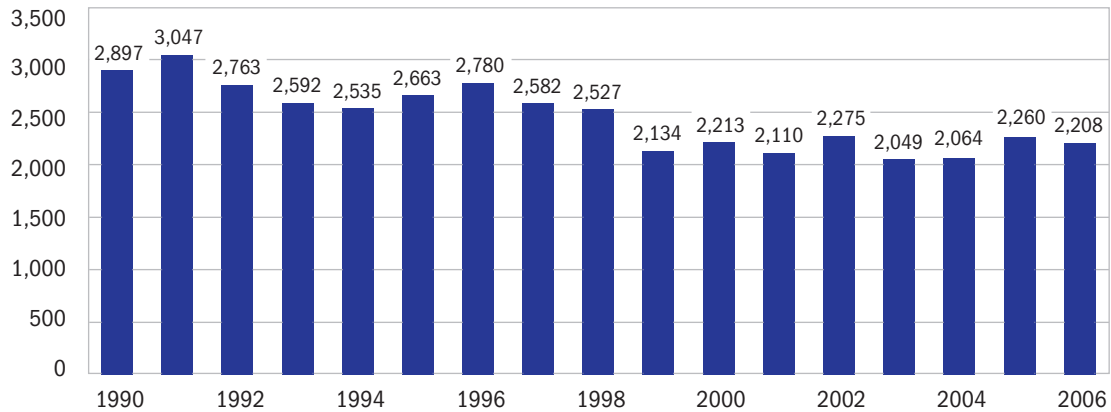
Glossary: See "Uniform Crime Report" for more information.

Source: New York State Division of Criminal Justice Service, Uniform Crime Reporting System. Population Source for rates: www.fedstats.gov, 2005 data.

Link: <http://www.securityoncampus.org/schools/cleryact/ucrhandbook.html>

Total Part II Arrests

Children under 18 years



Part II Crimes include simple assault, curfew offenses and loitering, embezzlement, forgery and counterfeiting, disorderly conduct, driving under the influence, drug offenses, fraud, gambling, liquor offenses, offenses against the family, prostitution, public drunkenness, runaways, sex offenses, stolen property, vandalism, vagrancy, and weapons offenses.

Glossary: See "Uniform Crime Report" for more information.

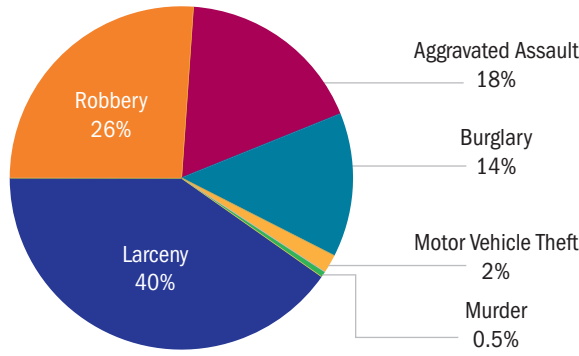
Notes: The Uniform Crime Report splits reported data into two separate categories; Part I and Part II Offenses.

Source: New York State Division of Criminal Justice Service, Uniform Crime Reporting System. Population Source for rates: www.fedstats.gov, 2005 data.

Link: <http://www.securityoncampus.org/schools/cleryact/ucrhandbook.html>

Part I Arrests by Crime, 2006

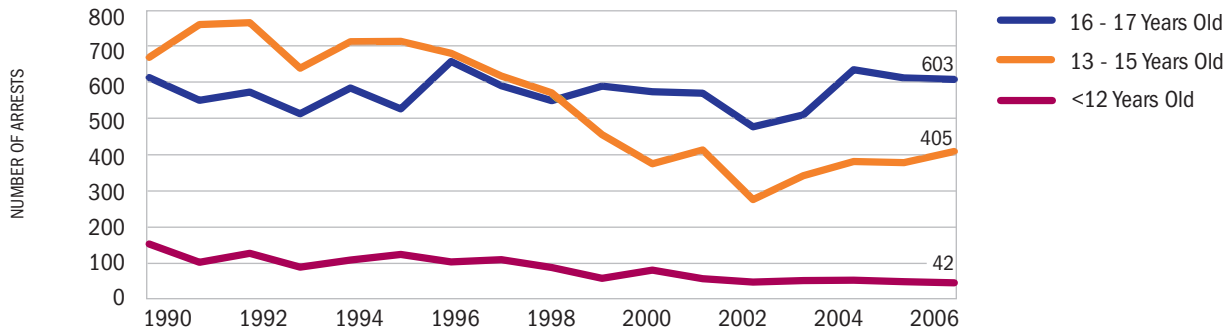
Youth under 18 Years Old



Notes: Percentages may not add up exactly to 100% due to rounding.

Part I Arrests by Age, 2006

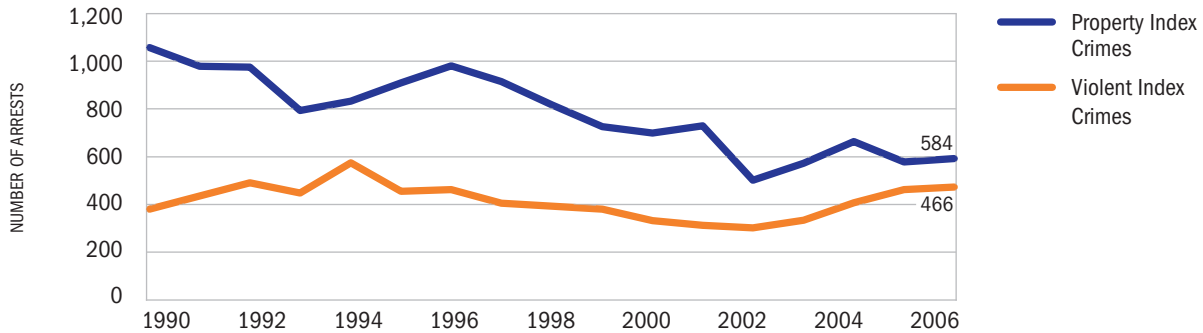
Youth under 18 Years Old



Notes: New York State categorizes arson as a Part II offense, although the FBI categorizes it as a Part I offense. This data utilized the New York State Standards.

Number of Arrests - Part I Index Crimes

Youth under 18 Years Old



Since 1990, Property Index Crimes has decreased by 44%, while Violent Index Crimes have increased by 25%.

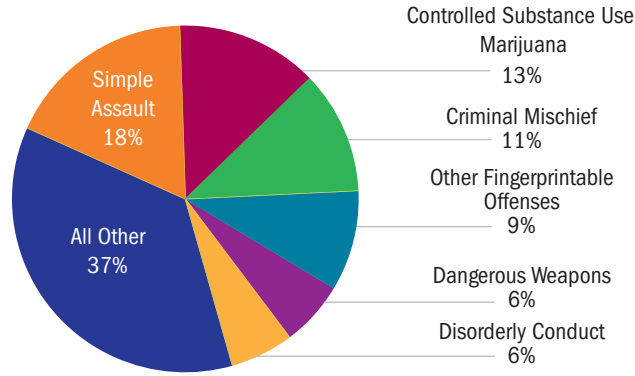
Notes: Index Crimes are subsets of Part I Offenses. Property Index Crimes include burglary, larceny and motor vehicle theft. Violent Index Crimes include murder, non-negligent manslaughter, forcible rape, robbery, and aggravated assault.

Glossary: See "Uniform Crime Report" for more information.

Source: New York State Division of Criminal Justice Service, Uniform Crime Reporting System.

Part II Arrests by Crime, 2006

Youth under 18 Years Old



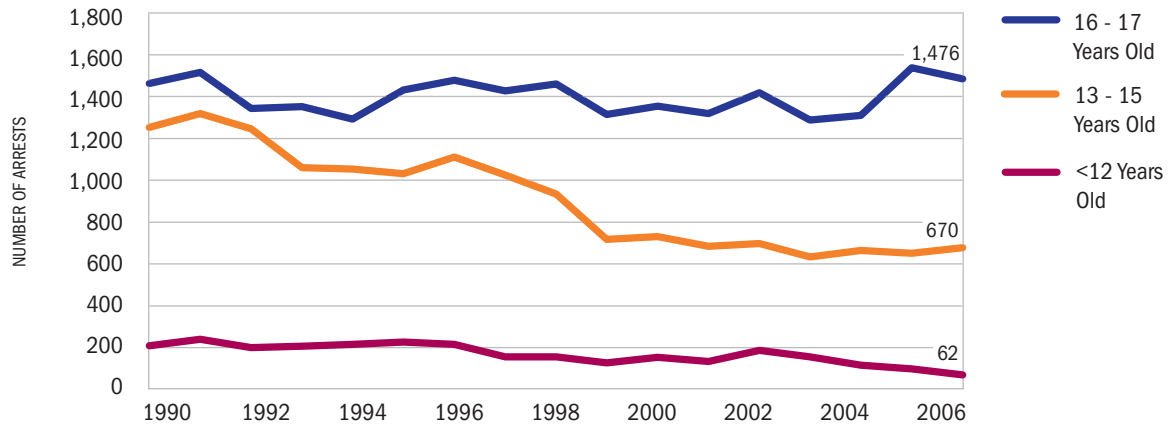
Notes: New York State categorizes arson as a Part II offense, although the FBI categorizes it as a Part I offense. This data utilized the New York State Standards. Arson only represented .4% of all Part II offenses.

Glossary: See "Uniform Crime Report" for more information.

Source: New York State Division of Criminal Justice Service, Uniform Crime Reporting System.

Part II Arrests by Age, 2006

Youth under 18 Years Old

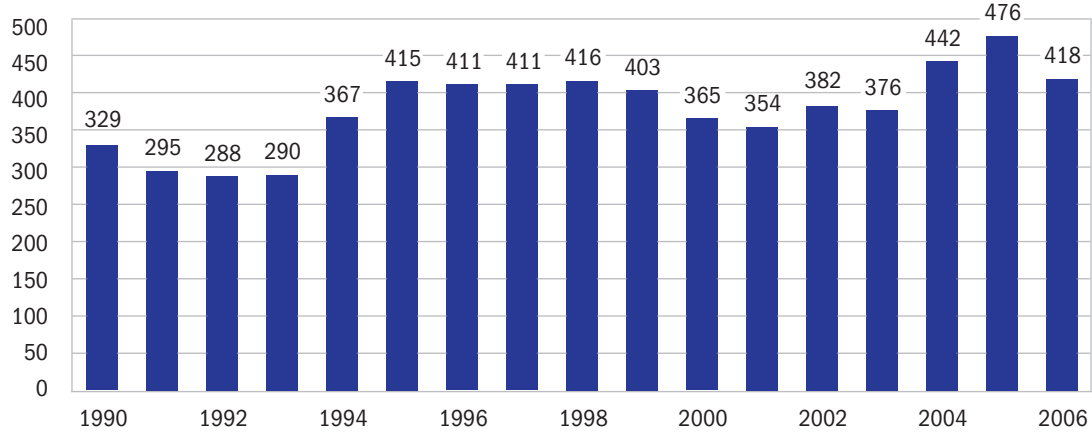


Glossary: See "Uniform Crime Report" for more information.

Source: New York State Division of Criminal Justice Service, Uniform Crime Reporting System.

Drug and Alcohol Related Arrests

Youth under 18 years Old

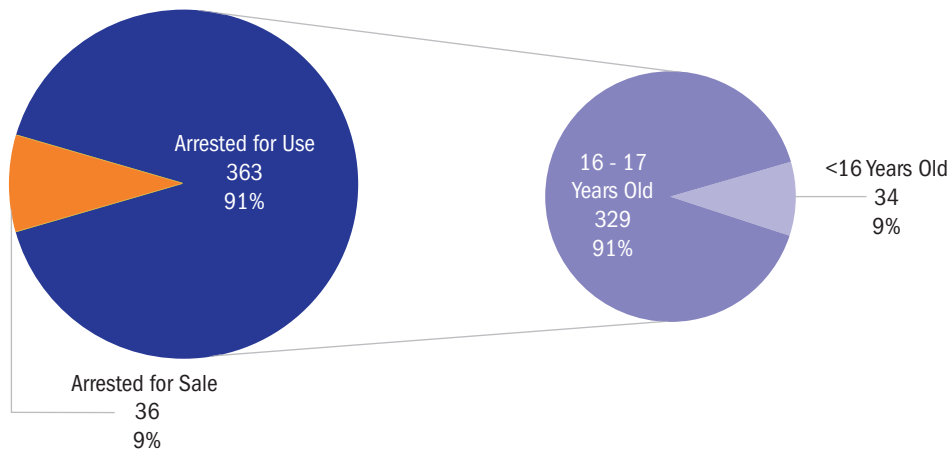


In 2006, for youth under 18, Westchester had the 6th lowest drug-related arrest rate among New York's 57 counties (excluding New York City).

Notes: Data represents arrests for use, possession or sale of drugs, public intoxication or driving under the influence.
 Source: New York State Division of Criminal Justice Service, Uniform Crime Reporting System. Population Source for rates: www.fedstats.gov, 2005 data.

Arrests for Sale/Use of Drugs, 2006

Youth Arrests under 18 Years Old

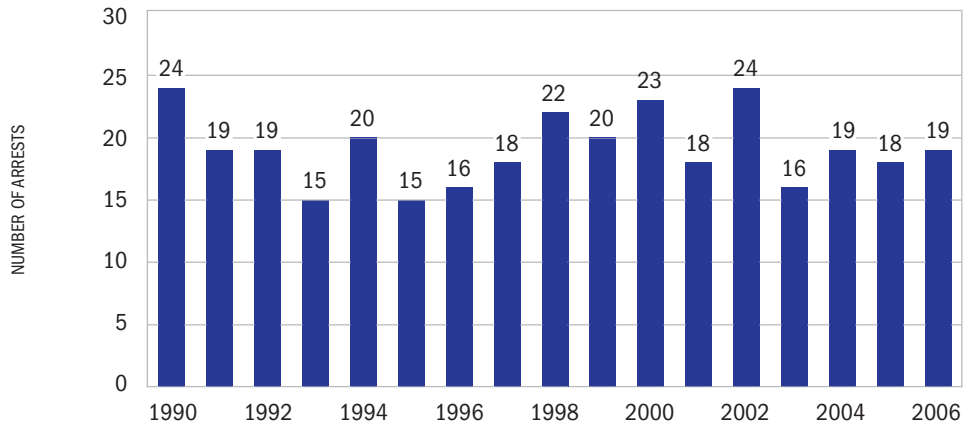


In 2006, among those under 18 years old, only 1 out of every 10 arrested for drug use was below the age of 16.

Source: New York State Division of Criminal Justice Service, Uniform Crime Reporting System.

Driving while Intoxicated

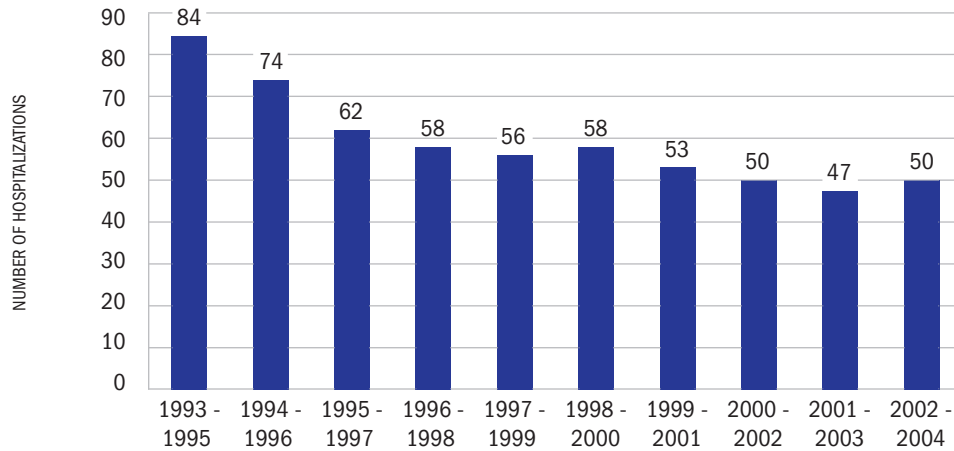
Youth under 18 Years Old



Notes: Driving while intoxicated includes arrests for driving or operating any vehicle while drunk or under the influence of liquor or narcotics.
 Glossary: See "Driving While Intoxicated" for more information.
 Source: New York State Division of Criminal Justice Service, Uniform Crime Reporting System.

Hospitalizations Resulting from Assault

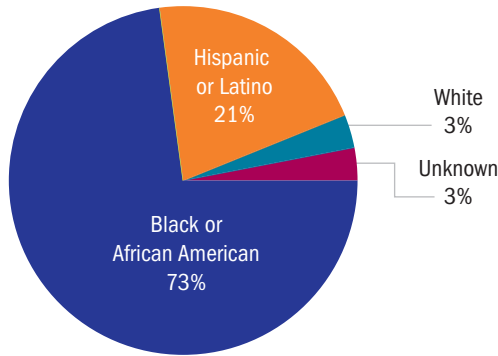
Youth 10 - 19 Years Old



Notes: Data represents a three year moving average of the number of youth discharged from hospitals as a result of an assault.
 Source: New York State Department of Health; Public Information Group; Statewide Planning and Research Cooperative System (SPARCS).
 New York State Kids Well-being Indicator Clearinghouse.
 Link: <http://www.nyskwic.org/index.cfm>

Youth in Adult Correctional Facilities by Race/Ethnicity, 2007

Under 18 Years Old



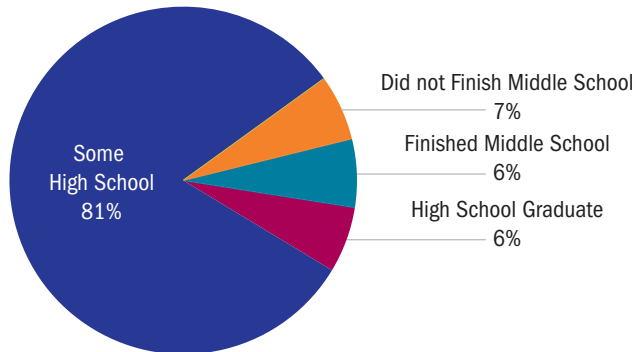
In 2007, there were 34 incarcerated youth, under 18 years old, in Westchester County's adult correctional facilities.

Notes: Data snapshot taken July 11, 2007. The Westchester County Correctional Facility houses persons who are persons at least 16 years old who are pending sentencing or who have been sentenced to one year or less through the Criminal Court system.

Source: Westchester County Department of Corrections.

Youth in Adult Correctional Facilities by Educational Attainment, 2007

Under 18 Years Old

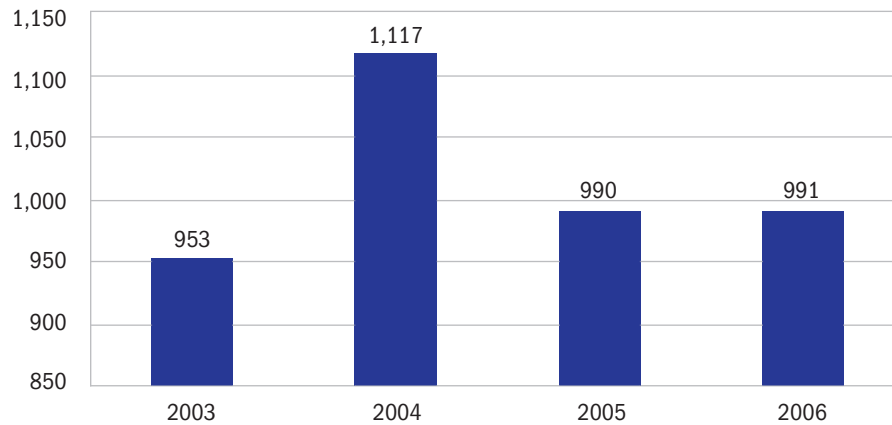


Notes: Data snapshot taken July 11, 2007. The Westchester County Correctional Facility houses persons who are persons at least 16 years old who are pending sentencing or who have been sentenced to one year or less through the Criminal Court system.

Source: Westchester County Department of Corrections.

Juvenile Delinquency

Number of Appearance Tickets

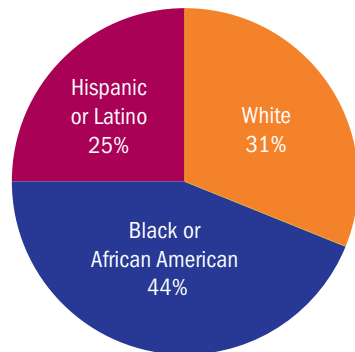


Juvenile Delinquent (JD) refers to a person, ages 7 - 16 years old, who committed an act that would constitute a crime if committed by an adult. After the arrest of the child, the arresting police jurisdiction issues the youth an Appearance Ticket.

Glossary: See "Juvenile Delinquency" for more information.
 Source: Westchester County Department of Probation.
 Link: <http://www.westchestergov.com/probation/Programs%20and%20Services/Chace/Appearance%20Tickets.htm>

Juvenile Delinquency by Race/Ethnicity 2006

Percent of Appearance Tickets Issued

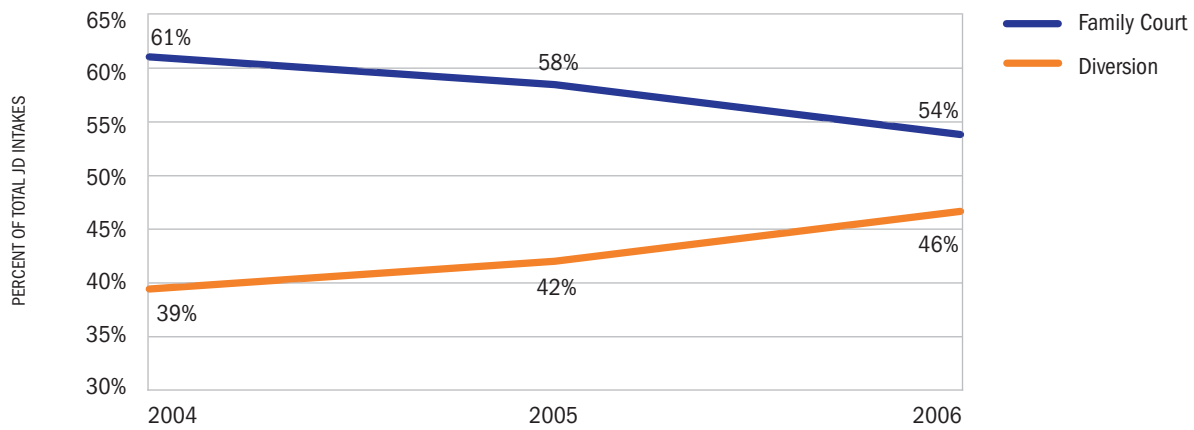


As a rate, per 10,000 youth of each ethnicity, African American youth were issued appearance tickets at a rate of 118.9, Hispanics at a rate of 47.3, and Whites at a rate of 20.7.

Notes: When calculating rates, the population source counts Hispanic or Latino as an ethnic group and may be of any race.
 Glossary: See "Juvenile Delinquency" for more information.
 Source: Westchester County Department of Probation. Population Source: American Community Survey, 2006.

Juvenile Delinquency

Percent of Cases Diverted or Prosecuted

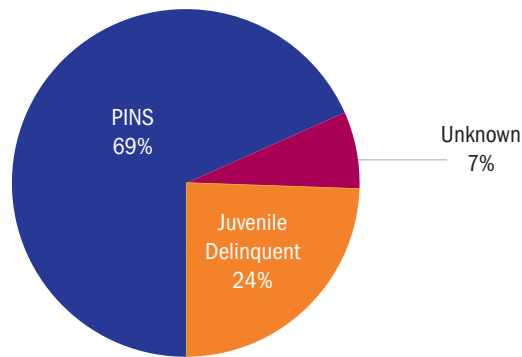


Juvenile Delinquency Intake provides the opportunity for the arrested child and parents to meet with a Probation Officer, in order to determine whether a matter may be resolved without court intervention (called “diversion”) or if it should be prosecuted by the County Attorney in the Family Court.

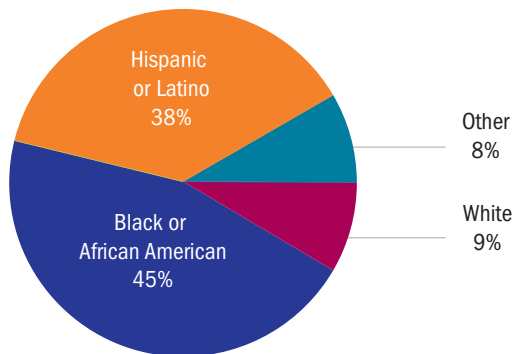
Glossary: See “Juvenile Delinquency” for more information.
 Source: Westchester County Department of Probation.

Youth under 18 Years Old in Non-Secure Detention, 2006

By Status



By Race/Ethnicity



PINS refers to Persons In Need of Supervision, juveniles ages 7 - 17 who have committed offenses that would not be crimes if committed by an adult.

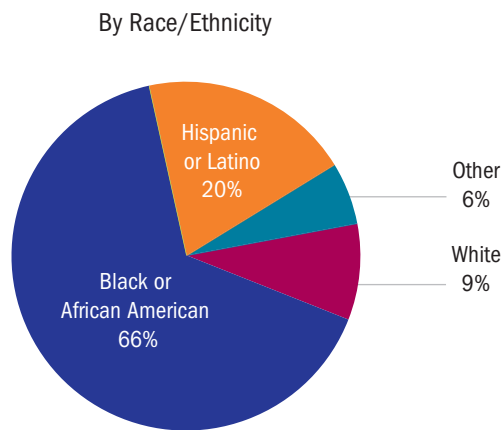
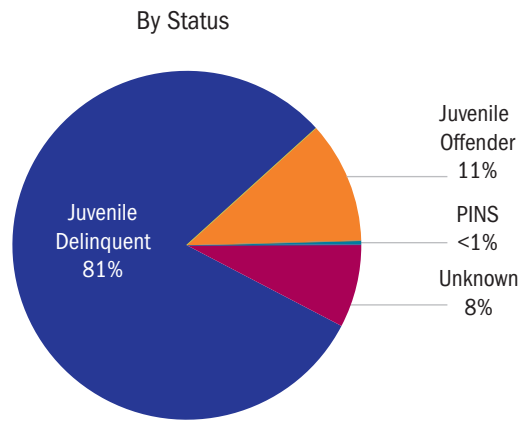
In 2006, 254 youth were placed in non-secure detention. 52% of those placed were female.

As a rate per 10,000 youth of each ethnicity, African American youth were placed in non-secure detention at a rate of 31.2, Hispanics at a rate of 18.4, Whites at a rate of 1.5, and Other at a rate of 4.1.

Notes: Non-Secure Detention provides structured residential care for alleged Juvenile Delinquents (JDs) in a less restrictive setting while awaiting disposition of their cases in Family Court. Data is the count of unduplicated youth served during the year (i.e. an individual youth is only counted once even if he goes to detention more than once in that year). Each individual youth is classified under only one race/ethnicity even if that particular youth is of multiple races/ethnicities. Individuals of Hispanic ethnicity will NOT be classified as Hispanic if he/she is of another race (ex. Black, White), but instead will be classified under that race. Only individuals who identify themselves as solely Hispanic will be counted as Hispanic.

Source: *Status and Race/Ethnicity Numbers*: Westchester County Department of Probation.
Population Numbers for Calculation Rates: American Community Survey, 2006

Youth in Secure Detention, 2006



In 2006, 244 youth were placed in secure detention. 20% of those placed in secure detention were female.

As a rate per 10,000 youth of each ethnicity, African American youth were placed in secure detention at a rate of 43.7, Hispanics at a rate of 9.2, Whites at a rate of 1.5, and Other at a rate of 2.8.

Notes: Data is the count of unduplicated youth served during the year (i.e. an individual youth is only counted once even if he goes to detention more than once in that year. Each individual youth is classified under only one race/ethnicity even if that particular youth is of multiple races/ethnicities. Individuals of Hispanic ethnicity will NOT be classified as Hispanic if he/she is of another race (ex. Black, White), but instead will be classified under that race. Only individuals who identify themselves as solely Hispanic will be counted as Hispanic.

Source: *Status and Race/Ethnicity Numbers*: Westchester County Department of Probation.
Population Numbers for Calculation Rates: American Community Survey, 2006

